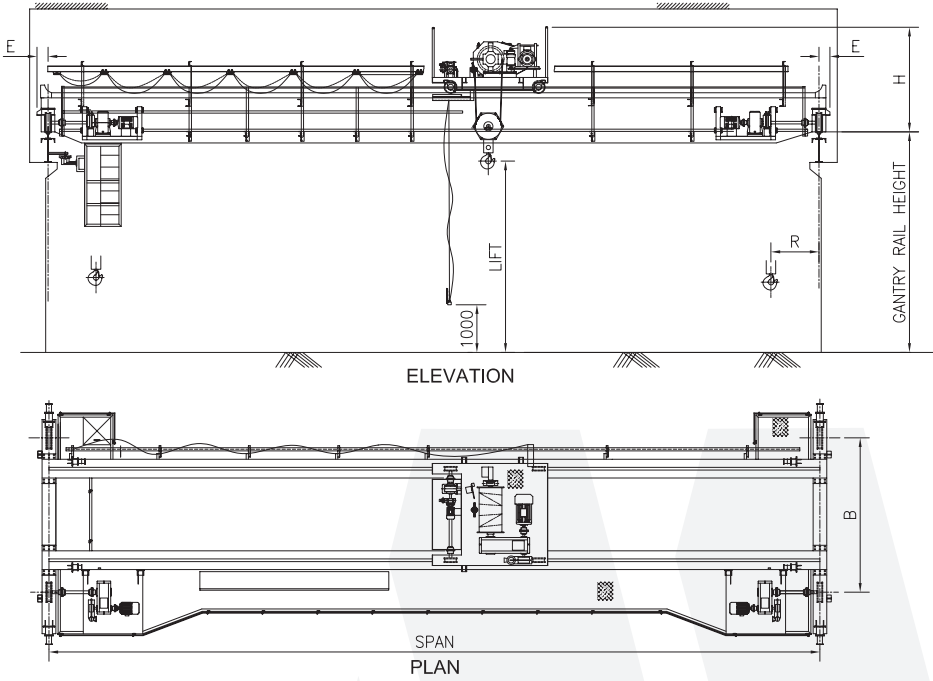


DOUBLE GIRDER EOT DATA



SWL	SPAN	Head Room (m) (H)	Side Clearance (m) (E)	Hook Approaches min (m) (R)	Wheel Base (m) (B)	L.T. Wheel Load (t)	Crane Weight (t)
5t	14m	1.8	0.25	0.8	3.0	5.5	11
	18m	1.8	0.25	0.8	3.6	6.0	13
	22m	2.0	0.25	0.8	4.0	6.7	15
	26m	2.2	0.25	0.8	4.1	7.7	19
	30m	2.2	0.25	0.8	5.0	9.7	26

SWL	SPAN	Head Room (m) (H)	Side Clearance (m) (E)	Hook Approaches min (m) (R)	Wheel Base (m) (B)	L.T. Wheel Load (t)	Crane Weight (t)
10t	14m	2.1	0.25	0.85	3.8	8.2	12
	18m	2.2	0.25	0.85	3.8	8.9	15
	22m	2.3	0.25	0.85	4.2	9.8	19
	26m	2.3	0.25	0.85	4.2	12.5	23
	30m	2.3	0.25	0.85	5.0	15	29

15t	14m	2.2	0.3	0.95	4	12.5	14
	18m	2.3	0.3	0.95	4	13.5	19
	22m	2.4	0.3	0.95	4.2	15	22
	26m	2.4	0.3	0.95	4.2	16	28
	30m	2.4	0.3	0.95	5	18	34

20t	14m	2.4	0.3	1.0	4	15	16
	18m	2.4	0.3	1.0	4	17.5	21
	22m	2.6	0.3	1.0	4.7	18.5	24
	26m	2.6	0.3	1.0	4.7	20	31
	30m	2.6	0.3	1.0	5	21.5	37

25/5t	18m	2.5	0.35	1.2	4	20	26
	22m	2.6	0.35	1.2	4.8	23	31
	26m	2.6	0.35	1.2	4.8	25	38
	30m	2.6	0.35	1.2	5	26.5	44

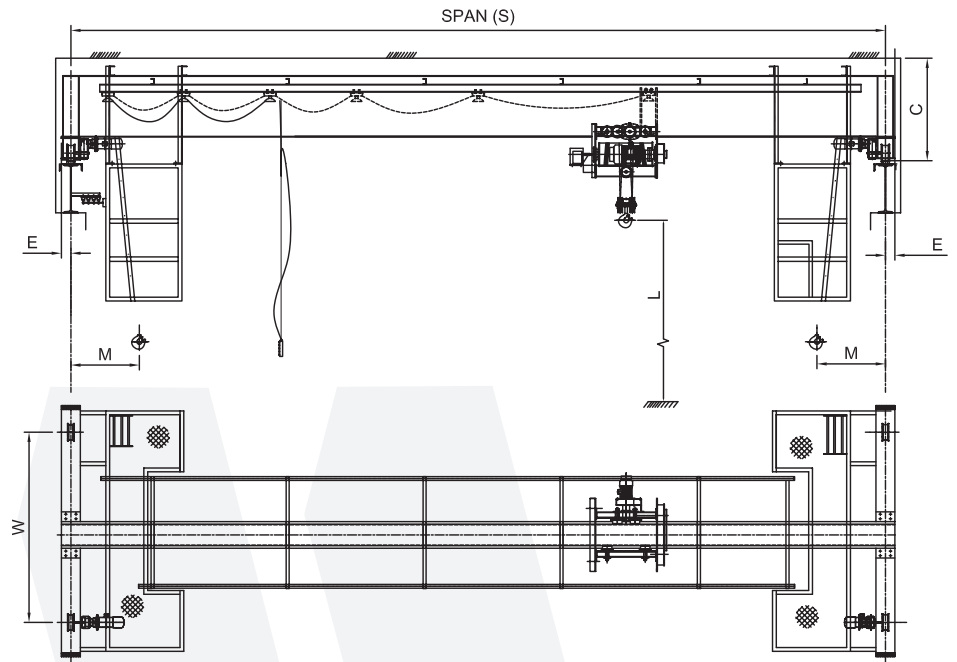
30/5t	18m	2.8	0.35	1.2	4	24	28
	22m	2.9	0.35	1.2	4.8	26	34
	26m	2.9	0.35	1.2	4.8	28	40
	30m	2.9	0.35	1.2	5	29.5	46

40/5t	18m	3.0	0.35	1.3	4	30	33
	22m	3.0	0.35	1.3	4.8	33	39
	26m	3.2	0.40	1.3	4.8	35	47
	30m	3.2	0.40	1.3	5	38	56

50/5t	18m	3.0	0.40	1.3	4	35	38
	22m	3.0	0.40	1.3	4.8	38	45
	26m	3.2	0.50	1.3	4.8	40	53
	30m	3.2	0.50	1.3	5	45	65

NOTE : ▶ Above details are for Medium Duty(M5) INDOOR. ▶ The data are approximate only. Exact data will be furnished against specific request.
 ▶ Due to continuous design improvements, dimensions are subject to change without notice.

SINGLE GIRDER EOT DATA



Capacity in Tonnes	SPAN Mtrs.	LIFT Mtrs.	Hoist Speed m/min	CT. Speed m/min	Wire Rope dia / No. of Falls	Crane Headroom mm C	Hook Approach mm M	End Clearance mm E	LT Wheel base mm W	LT Wheel load Ton (without impact)	Crane Weight Tonnes
2	6	6-12	6	15	8/4	600	900	160	1800	1.6	2.5
	8					600	900	160	2000	1.7	2.9
	12					800	900	160	2400	1.9	3.8
	15					950	900	160	3000	2.2	4.5
	18					950	900	160	3600	2.3	5.5
	20					1000	900	160	3800	2.5	6.0
3	6	6-12	3	15	8/4	700	1050	175	2000	2.3	3
	8					700	1050	175	2000	2.6	3.6
	12					850	1050	175	2400	2.7	4.6
	15		6			1000	1050	175	3000	2.8	5.2
	18					1000	1050	175	3600	3.1	6.5
	20					1000	1050	175	3800	3.5	7
5	6	6-12	3	15	12/4	700	1100	225	2000	3.2	3.1
	8					800	1100	225	2200	3.3	3.7
	12					950	1100	225	2400	3.5	4.7
	15		6			1100	1100	225	3000	3.8	5.9
	18					1100	1100	225	3600	4.2	7.4
	20					1100	1100	225	3800	5.0	8
7.5	6	6-12	3	15	14/4	800	1150	225	2000	4.9	4.3
	8					1000	1150	225	2200	5.1	5.2
	12					1000	1150	225	2400	5.4	6.3
	15		6			1200	1150	225	3000	5.6	7.4
	18					1200	1150	225	3600	6.0	8
	20					1200	1150	225	3800	6.0	8.7
10	6	6-12	2.5	15	12/8	800	1250	250	2000	6.0	4.7
	8					1000	1250	250	2200	6.2	5.9
	12					1100	1250	250	2400	6.5	6.9
	15		5			1250	1250	250	3000	6.8	8.3
	18					1250	1250	250	3600	7.3	10.2
	20					1250	1250	250	3800	8.3	11

NOTE: ▶ Above specifications are for Class II Duty Crane as per IS 3177/807/ IS 3938 and technical parameters listed.
 ▶ Above are as per our design standards. Exact specifications to suit customers requirements can be provided
 ▶ Due to continuous design improvements, dimensions are subject to change without notice.